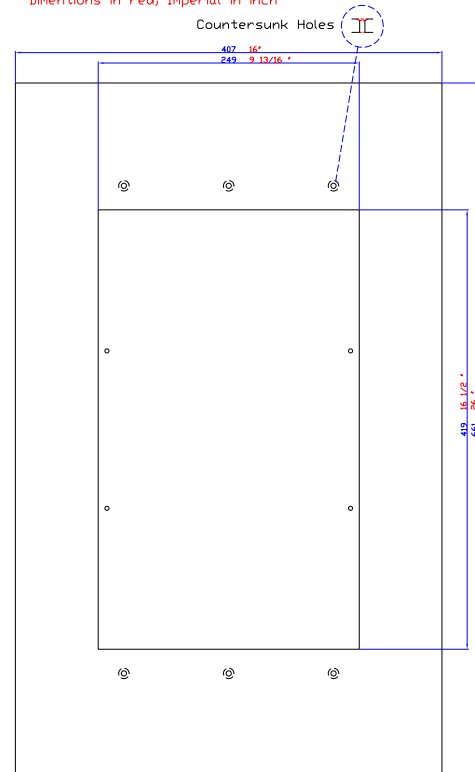


PRE

Pre-mount KIT, use this to 'mark your spot' or save time and install the speaker with this before dry-wall

Nakymatone Frame Trim dimension sheet Rev1-1
Thickness 1/2", 12.7mm

Dimensions in blue; Metric in mm
Dimensions in red; Imperial in inch



Model:	PRE
Purpose:	Provides the installer the option to mount the Nakymatone Speakers to Studs/Joists during Rough stage and installs before drywall
Brick/Concrete applications:	Provides a solid mounting method to accommodate Brick and Solid wall installations
Construction:	Plywood Core with MDF face and Sound absorbing rubber membrane to de-couple mount from structure
Dimensions:	407 mm x 661 mm x 12.7 mm (H x W x D) 16" x 26" x 1/2" STANDARD for 1/2" drywall applications can ship as required/requested drywall thickness (Special order)
Weight:	750 grams per piece
Manufacturer:	Nakymatone, Made in Canada
Warranty:	10 Year Replacement warranty Patent Pending